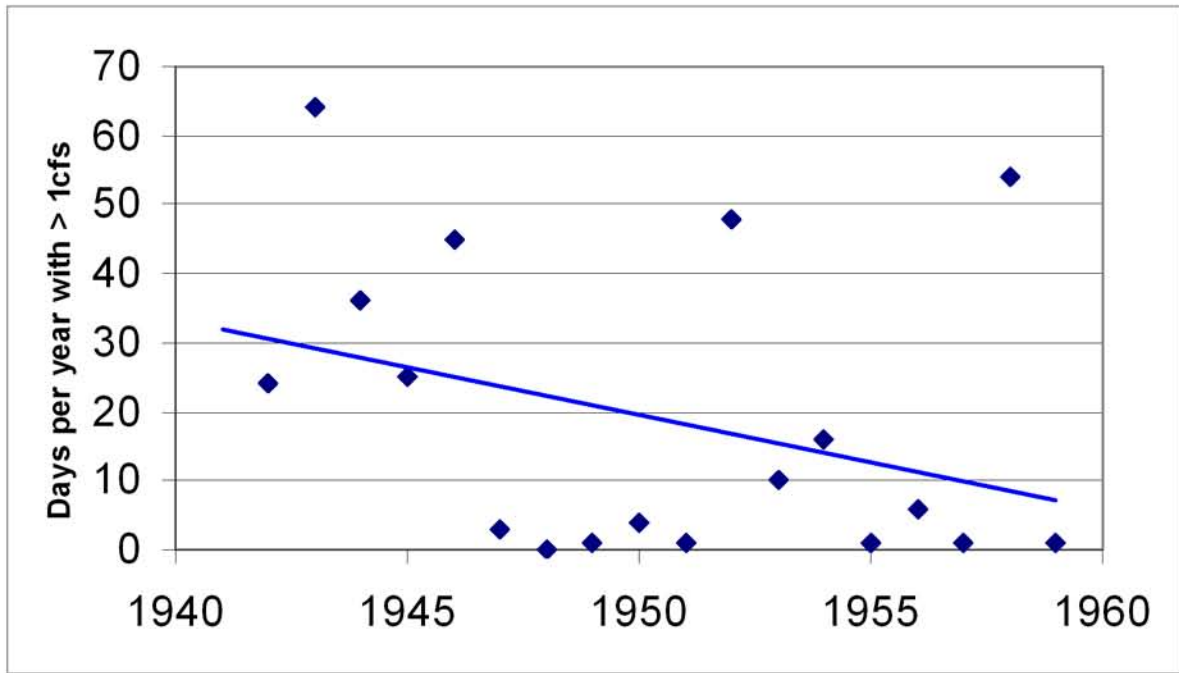
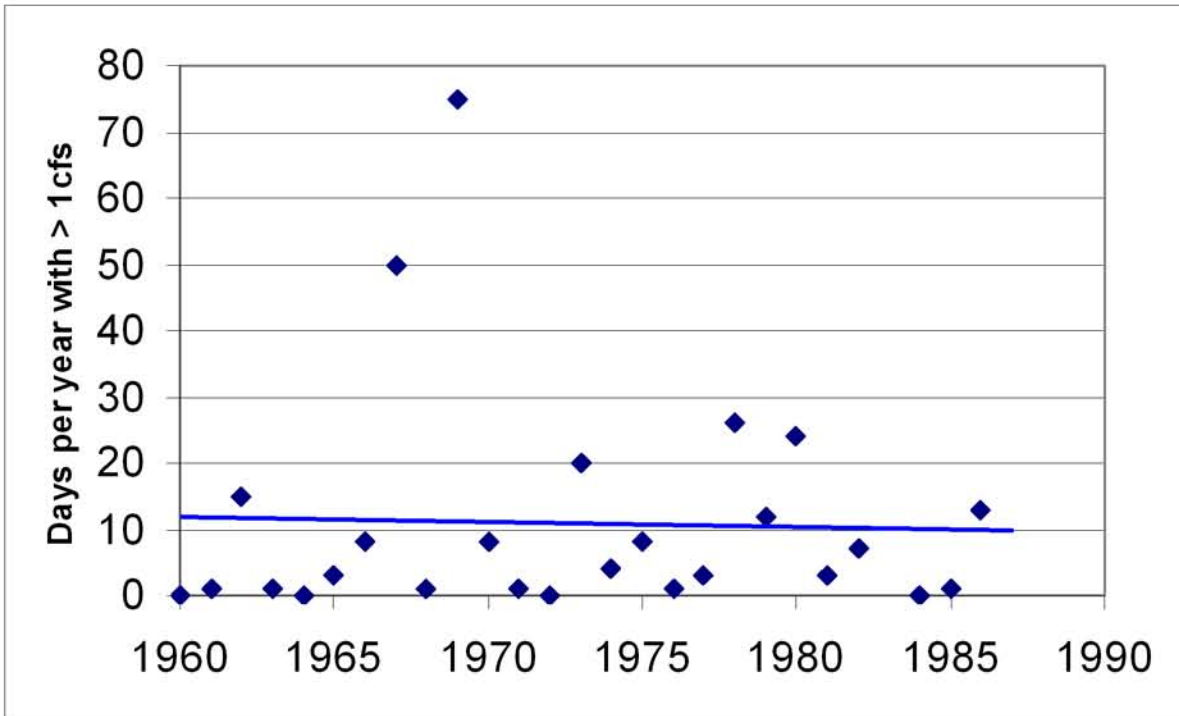


Pre-Twitchell Dam



Post-Twitchell Dam



Notes:

1. Values exceeding the mean plus two standard deviations are considered outliers and were removed.
2. Pre-Twitchell Dam dataset illustrates decreasing trend in number of days per year that the Santa Maria River near Guadalupe was flowing.
3. Post-Twitchell Dam dataset shows a stabilized trend with an average of 10 days per year with water flowing in the River. This is a consequence of management of flows with the Twitchell Dam.



SANTA MARIA RIVER FLOW RATE NEAR GUADALUPE
NUMBER OF DAYS PER YEAR WITH FLOWS EXCEEDING 1 CFS (1941-1987)

Nipomo Mesa Water Resource Capacity Study
 San Luis Obispo County, California
 Copy of document found at www.NoNewWipTax.com

Figure 9